

S80 Line

The new series S80 consists of fireplaces, energy, fan heater, ecological, closed type with a ceramic glass door of high durability. It is produced in 4 different models. The fireplace is constructed as one whole construction (monoblocco). The combustion space is made of cast iron, a material durable and efficient. The incineration chamber is absolutely air-tight. It includes two hot air outputs. It also carries out a secondary combustion (ecological). It has an automatic tamper- a patent of STARFIRE. The fireplace has a 5-year written warranty. It is a qualitative and economic solution for any kind of space. The new series S80 can be cased with all STARFIRE's cases.



Special characteristics

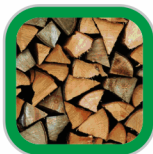
- Ergonomic handle
- Tamper of combustion air input regulation
- Sliding upwards door with silent operation
- Adjustable in height feet
- Combustion chamber totally made of cast iron of high durability
- Cast iron grill and metal bucket for ash cleaning
- Cast iron with holes on the backside (ecological burning and more calories)
- Key for opening the door
- Adjustable chimney tamper
- Ceramic glass door of high durability (thermal shock 800c)
- Opening door (mainly for the glass cleaning)
- Hot air exhaust duct (for the space we want to heat)
- Metal reel with safety for the door mechanism
- 5-year written warranty



Thermal efficiency



Thermal power



Wood consumption per hour
4 (min) > 7 (max)
Kg/h

