



# Energy wood stove



# PABLO

## Energy wood stove by Starfire Caminetti

Starfire Caminetti presents the new energy, ecological wood stove Pablo. The whole construction of the wood stove is made of steel, 5mm thick. It has the new technology of exhaust combustion which results in an additional thermal power with the minimum consumption of wood. The door is made of ceramic glass of high thermal endurance and the whole chamber is made of Czech firebricks.

The energy wood stove Pablo has a modern design and is an entirely Greek production.

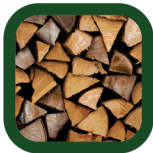
It has a 5-year factory warranty by Starfire Caminetti.



Thermal efficiency



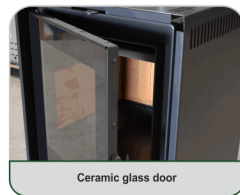
Thermal power



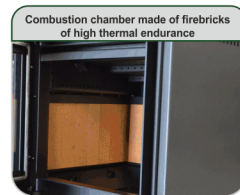
Wood consumption per hour  
1 (min) > 3 (max)  
Kg/h



Whole construction made of steel 5mm



Ceramic glass door



Combustion chamber made of firebricks of high thermal endurance



Afterburner exhaust system (GBS)



Sompa Pablo

Afterburner exhaust system

The energy wood stove Pablo incorporates the new afterburner exhaust system of Starfire Caminetti (GAS BURN SYSTEM) for cleaner exhaust gases and greater thermal power and efficiency.

